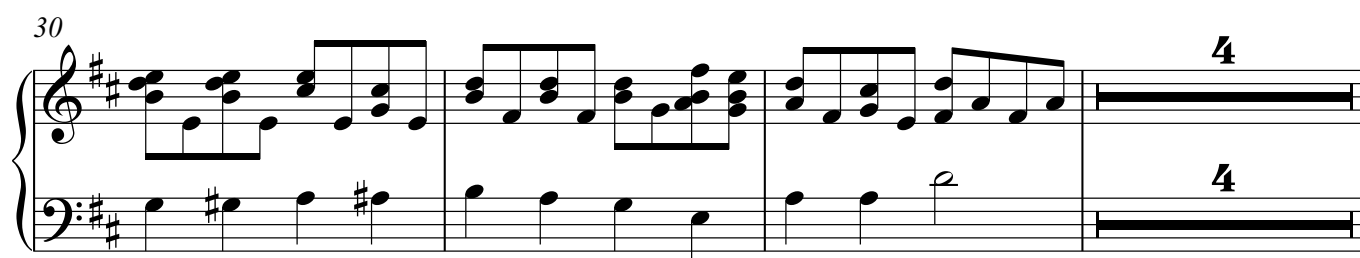
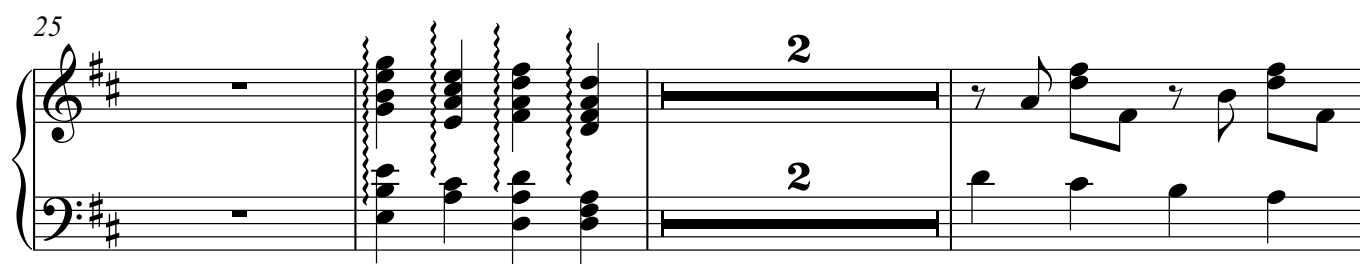
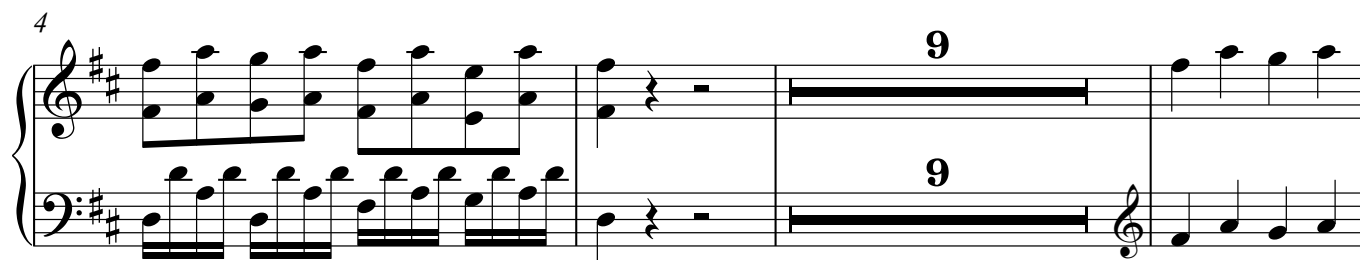
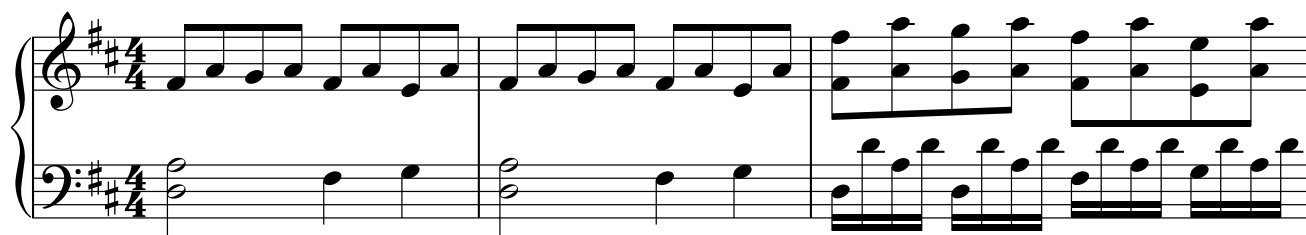


Celesta

СЛАВА, СЛАВА

Д.Бортнянский



37

Measures 37 and 38. Measure 37 features a treble clef with a key signature of two sharps (F# and C#) and a 2/4 time signature. The bass clef has a key signature of two sharps (F# and C#). Measure 38 continues the melody in the treble clef with a key signature of one sharp (F#) and a 2/4 time signature. The bass clef has a key signature of one sharp (F#).

39

Measures 39 and 40. Measure 39 features a treble clef with a key signature of one sharp (F#) and a 2/4 time signature. The bass clef has a key signature of one sharp (F#). Measure 40 continues the melody in the treble clef with a key signature of one sharp (F#) and a 2/4 time signature. The bass clef has a key signature of one sharp (F#).

43

Measures 43 and 44. Measure 43 features a treble clef with a key signature of one sharp (F#) and a 2/4 time signature. The bass clef has a key signature of one sharp (F#). Measure 44 continues the melody in the treble clef with a key signature of one sharp (F#) and a 2/4 time signature. The bass clef has a key signature of one sharp (F#).

49

Measures 49 and 50. Measure 49 features a treble clef with a key signature of one sharp (F#) and a 2/4 time signature. The bass clef has a key signature of one sharp (F#). Measure 50 continues the melody in the treble clef with a key signature of one sharp (F#) and a 2/4 time signature. The bass clef has a key signature of one sharp (F#).

53

Measures 53 and 54. Measure 53 features a treble clef with a key signature of one sharp (F#) and a 2/4 time signature. The bass clef has a key signature of one sharp (F#). Measure 54 continues the melody in the treble clef with a key signature of one sharp (F#) and a 2/4 time signature. The bass clef has a key signature of one sharp (F#).

69

Measures 69 and 70. Measure 69 features a treble clef with a key signature of one sharp (F#) and a 2/4 time signature. The bass clef has a key signature of one sharp (F#). Measure 70 continues the melody in the treble clef with a key signature of one sharp (F#) and a 2/4 time signature. The bass clef has a key signature of one sharp (F#).